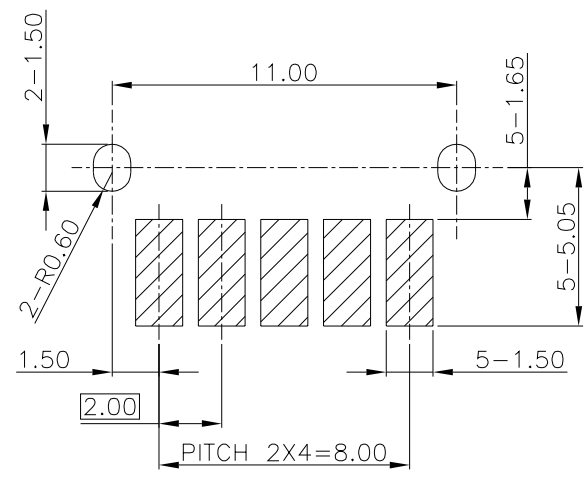
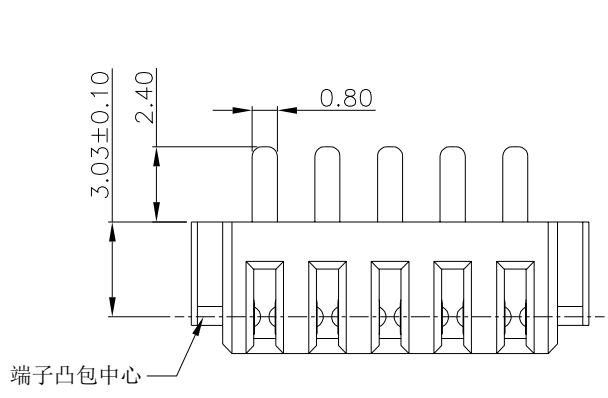
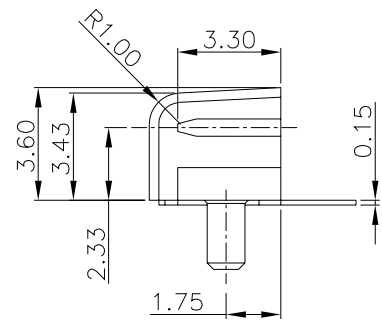
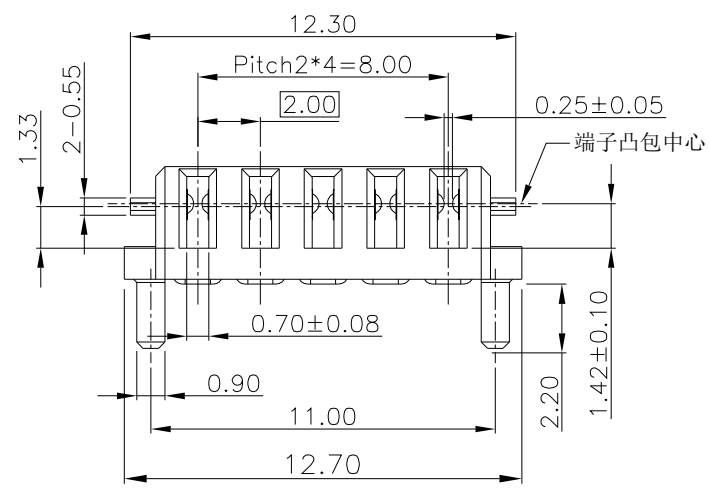
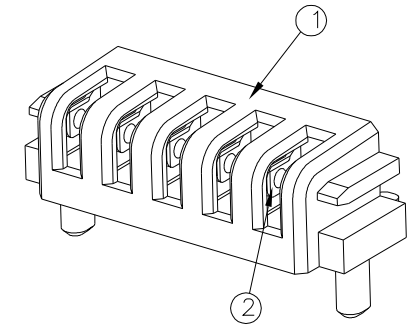


REV.	DATE	MODIFICATION	APPROVER
A0	2018.01.19	NEW	Jason



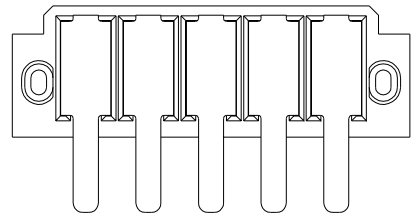
RECOMMENDED P.C BOARD LAYOUT (TOP VIEW)
TOLERANCES UNLESS OTHERWISE SPEC +/-0.05
▨ PAD AREA



SPECIFICATION

- Mechanical performance:
 - 1.1 Insertion and extraction force: 0.1~2.0kgf,
 - 1.2 Durability: 3000 cycles .
- Electrical and environment performance
 - 2.1 Current rating: 1A
 - 2.2 Voltage rating: 8V
 - 2.3 Insulation resistance: 100MΩ Min. at 500V DC (After Testing)
 - 2.4 Terminal contact resistance: 30mΩ Max.
 - 2.5 Withstanding voltage: 500V(r.m.s.)AC at 1mA Max. for one minute
 - 2.6 Operating temperature: -20℃~ +80℃
- Packing Regulation: Tray

②	TERMINAL	COPPER ALLOY		SEE PART NO.
①	HOUSING	HIGH TEMP. PLASTIC	BLACK	UL94V-0
NO.	DESCRIPTION	MATERIAL	COLOR	REMARK



GENERAL TOLERANCE				UNITS mm	
SELECT	✓			MAT'L	
TOL	1	2	3	FINISH	
DN.				Q'TY	
X.XXX	±0.10	±0.05	±0.15		
X.XX	±0.15	±0.13	±0.25		
X.X	±0.20	±0.25	±0.5		
X.	±0.30	±0.38	±1.00		
ANGLE	±2°				

NAME:	BATTERY 5P H=3.75	深圳市爱特姆科技有限公司 SHENZHEN ATOM TECHNOLOGY CO., LTD.		
PART NO:	BA20005-A375300	TITLE:	BATTERY 2.0mm 5P SMT H=3.75 带定位柱 镀金1u" TRAY	
APPD:		DWG NO.	ATOM-A03636	
CHKD:		SCALE	SHEET	REV
DR: LiuDan 2018.01.19		1:1	1 OF 1	A0