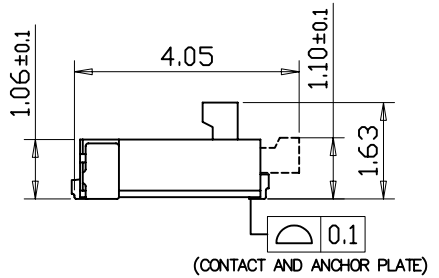
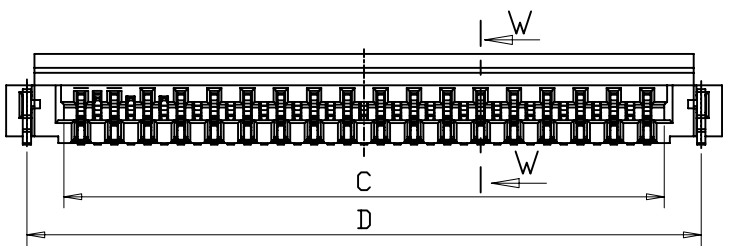
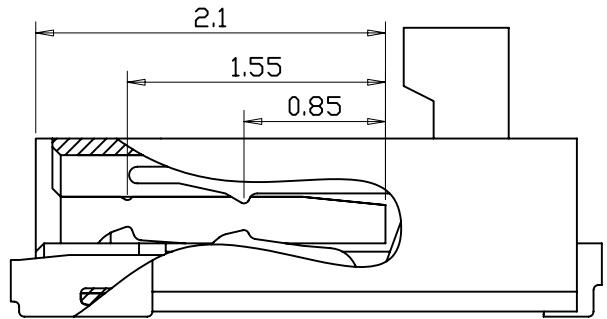
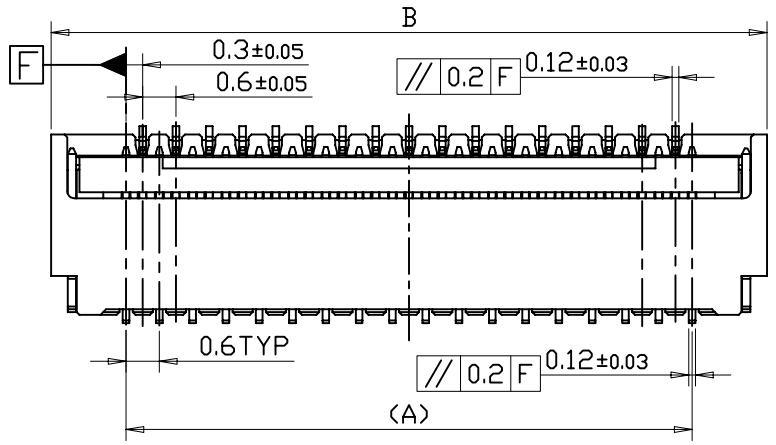


REV.	DATE	ECN NO.	MODIFICATION	APPROVER
A	2014/09/01	/	NEW	Jason



PIN NO.	A	B	C	D
11	3.0	5.7	3.62	4.95
13	3.6	6.3	4.22	5.55
15	4.2	6.9	4.82	6.15
17	4.8	7.5	5.42	6.75
19	5.4	8.1	6.02	7.35
21	6.0	8.7	6.62	7.95
23	6.6	9.3	7.22	8.55
25	7.2	9.9	7.82	9.15
27	7.8	10.5	8.42	9.75
29	8.4	11.1	9.02	10.35
31	9.0	11.7	9.62	10.95
33	9.6	12.3	10.22	11.55
35	10.2	12.9	10.82	12.15
37	10.8	13.5	11.42	12.75
39	11.4	14.1	12.02	13.35
41	12.0	14.7	12.62	13.95
43	12.6	15.3	13.22	14.55
45	13.2	15.9	13.82	15.15
47	13.8	16.5	14.42	15.75
49	14.4	17.1	15.02	16.35
51	15.0	17.7	15.62	16.95

Note:

1. Material

- 1.1 Housing :LCP UL94V-0; Color: Natural.
- 1.2 Actuator:PA46 UL94 HB; Color: Black.
- 1.3 Contact :Phosphor Bronze.
- 1.4 Metal Tab: Phosphor Bronze.

2. Plating

2.1 Contact:

- 0.5μm MIN Nickel Underplating Overall.
- 0.1μm MIN Gold Plating On Contact Area.
- 0.08 To 0.2μm MIN Gold Plating On Tail Area.

2.2 Metal Tab:

- 1 To 2.5μm Nickel Underplating Overall.
- 2 To 4μm Matte Tin Plating Over Nickel.

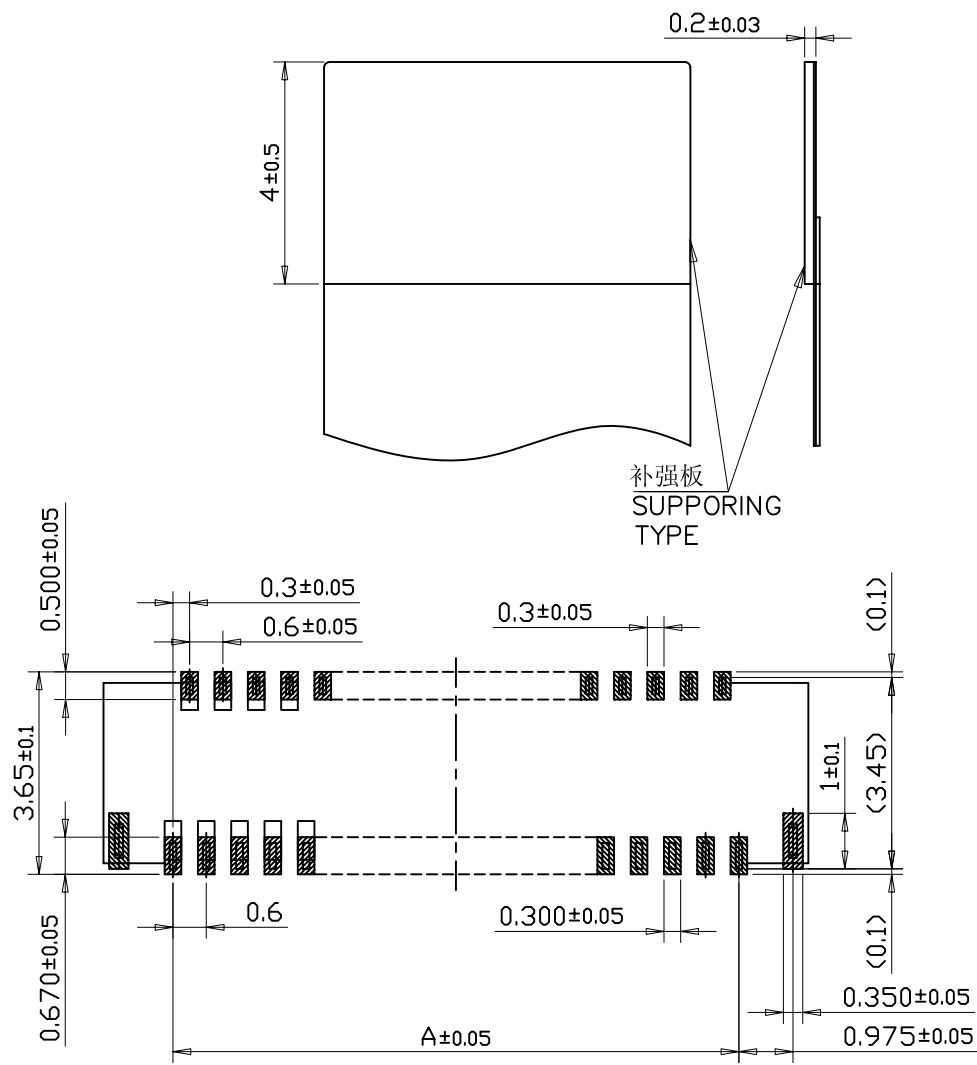
3. Rating

- 3.1 Rated Voltage: DC/AC 50V.
- 3.2 Rated Current: DC/AC 0.2A.
- 3.3 Withstanding Voltage: AC 200Vrms/min.
- 3.4 Operating Temperature: -40°C To 85°C.

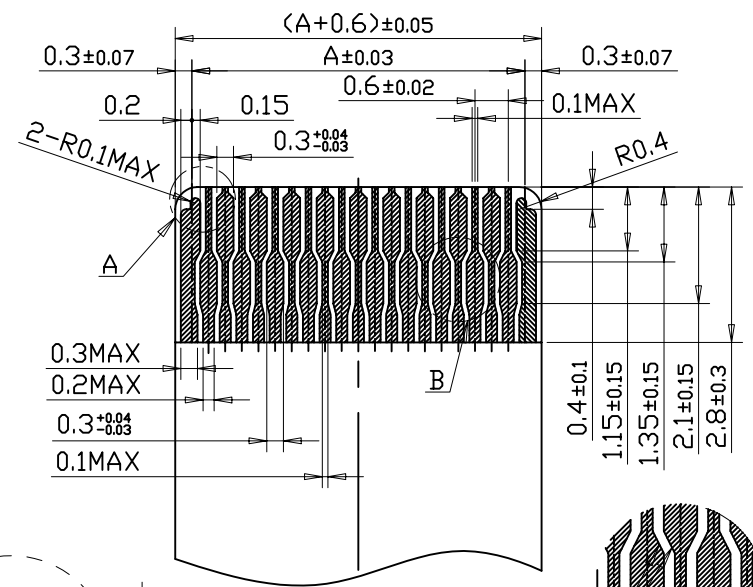
4. Applicable FPC Thickness: 0.2mm.

GENERAL TOLERANCE			UNITS	mm	NAME:	FPC0.3 RA SMT H=1.0	深圳市爱特姆科技有限公司 SHENZHEN ATOM TECHNOLOGY CO., LTD.		
SELECT					PART NO:	FPC030**-42***	TITLE:		
ON.	TOL.	1	2	3	APPD:	PETER	FPC0.3mm XP SMT 前插后掀(H=1.0mm)		
X.XXX	±0.15	±0.05	±0.01		CHKD:	JASON	DWG NO.		
X.XX	±0.25	±0.13	±0.05		DR:	DAVID	ATOM-A02395		
X.X	±0.30	±0.25	±0.10				SCALE SHEET REV		
X.	±0.38	±0.38	±1.00				1:1 1/2 A		
ANGLE	±*		±2'						

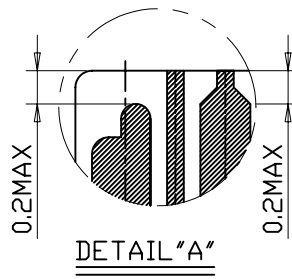
5	6	7	8
REV.	DATE	ECN NO.	MODIFICATION
A	2014/09/01	/	NEW
			APPROVER
			Jason



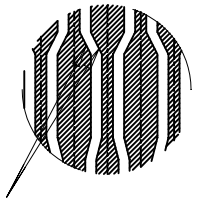
MOUNTING LAYOUT



APPLICABLE FPC



DETAIL "A"



DETAIL "B"

For prevention against an open circuit in being bent, the tapered areas shall be laid as indicated

GENERAL TOLERANCE			UNITS	mm	NAME:	FPC0.3 RA SMT H=1.0 ATOM ® 深圳市爱特姆科技有限公司 SHENZHEN ATOM TECHNOLOGY CO., LTD.		
SELECT					PART NO:	FPC030**-42*** TITLE: FPC0.3mm XP SMT 前插后掀(H=1.0mm)		
ON.	TOL.	1	2	3	APPD:	PETER DWG NO. ATOM-A02395		
X.XXX	±0.15	±0.05	±0.01		CHKD:	JASON		
X.XX	±0.25	±0.13	±0.05		DR:	DAVID		
X.X	±0.30	±0.25	±0.10					
X.	±0.38	±0.38	±1.00					
ANGLE	±*		±2'					