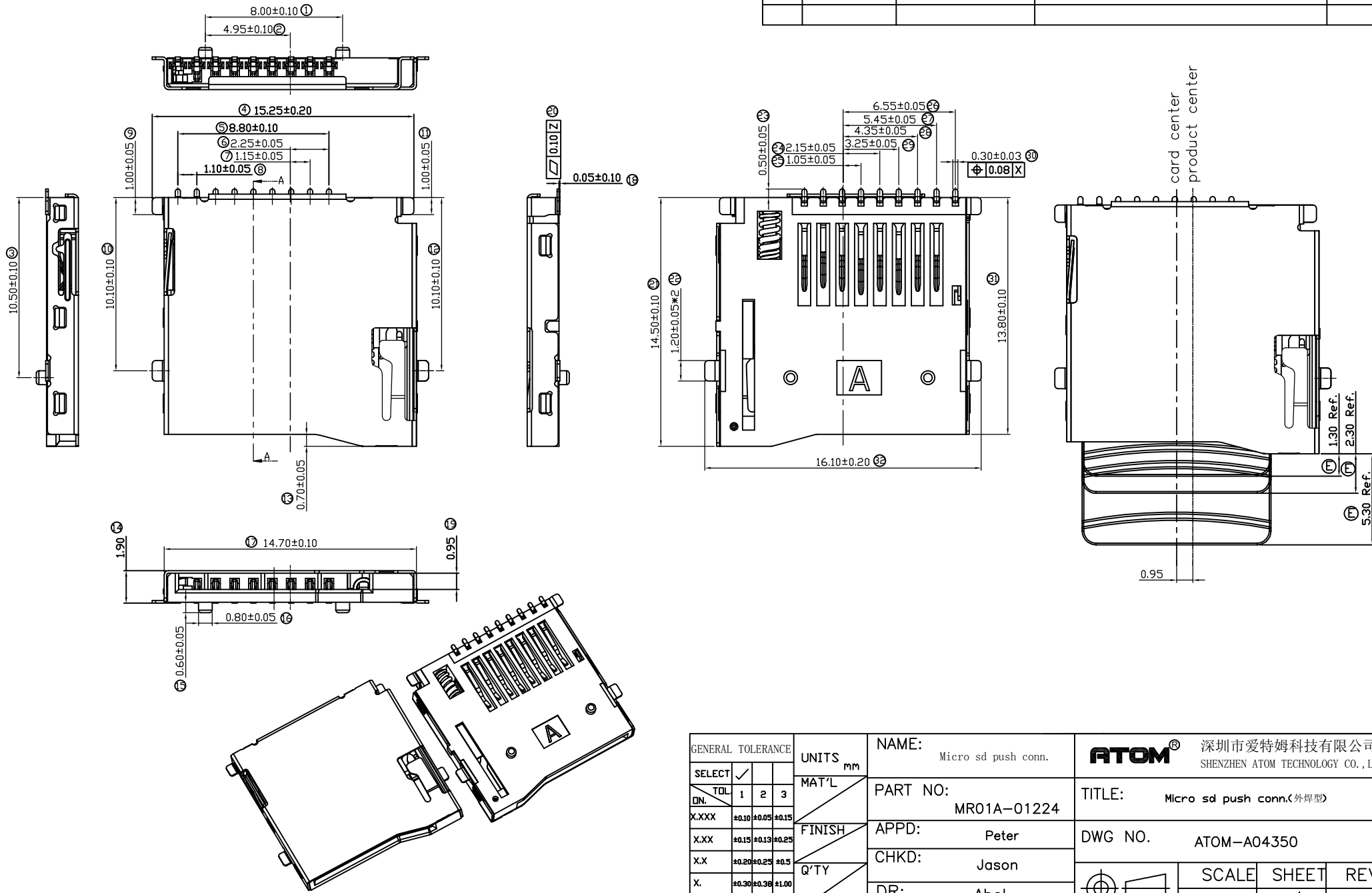


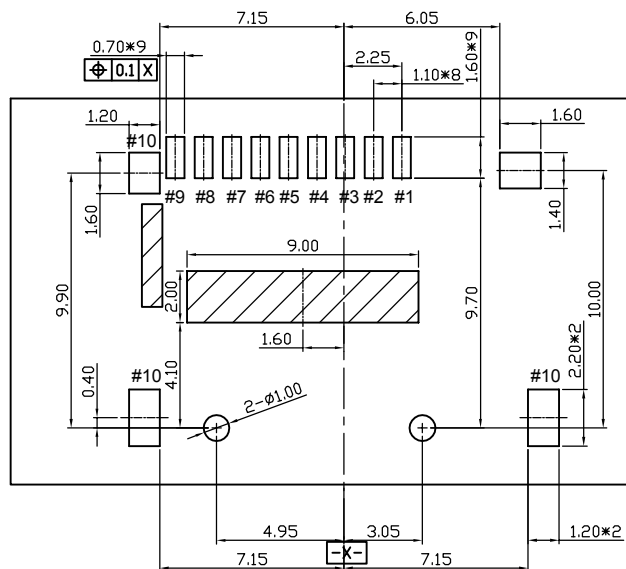
ACAD GENERATED DRAWING. DON'T CHANGE BY HAND

REV	DATE	ECN NO.	MODIFICATION	APPROVER
A0	2019/03/29		初版发行	Jason



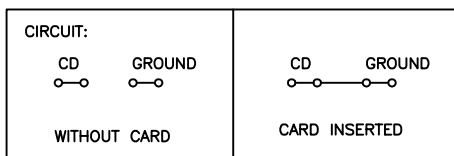
GENERAL TOLERANCE			UNITS	NAME: Micro sd push conn.		深圳市爱特姆科技有限公司 SHENZHEN ATOM TECHNOLOGY CO., LTD.		
SELECT	TOL	1	2	3	MAT'L	PART NO: MR01A-01224		TITLE: Micro sd push conn.(外焊型)
DN.						APPD: Peter		DWG NO. ATOM-A04350
X.XXX	±0.10	±0.05	±0.15		FINISH	CHKD: Jason		SCALE 1:1
X.XX	±0.15	±0.13	±0.25		Q'TY	DR: Abel		SHEET 1/2
X.X	±0.20	±0.25	±0.5					REV AO
X.	±0.30	±0.38	±1.00					
ANGLE	±2°							

ACAD GENERATED DRAWING. DON'T CHANGE BY HAND



RECOMMENDED PCB LAYOUT
(ALL TOLERANCE ARE ± 0.05)

:PROHIBITION AREA



Pin No.	MICRO SD
PIN1	DAT2 1P
PIN2	CD/DAT3 2P
PIN3	CMD 3P
PIN4	VDD 4P
PIN5	CLK 5P
PIN6	VSS 6P
PIN7	DAT0 7P
PIN8	DAT1 8P
PIN9	CARD DETECT
PIN10	GROUND

SPECIFICATION

- Material:
 - housing: High Temperature thermoplastic,UL94V-0
 - orbit: High Temperature thermoplastic,UL94V-0
 - Terminal:Copper Alloy
 - Shell:Stainless
- Electrical Characteristics:
 - Operating voltage : 10V AC(rms)/DC.
 - Current rating : 0.5 A.
 - Operating Temperature: $-25^{\circ}\text{C}\sim+85^{\circ}\text{C}$.
 - Insulation resistance: 1000M ohms min. at 250VDC
 - Dielectric withstanding voltage:500 VAC/1minute.
 - Contact resistance: 100m ohms max.
- Mechanical characteristics
 - 3.1 Mating durability:10000 cycles.
 - 3.2 Insertion force: 30N Max.
 - 3.3 Extraction force: 1~30N
 - 3.4 Mating cycle: 10000 cycles at the speed rate of 400-600 cycles/h; Without distortion of plastic and serious wear and tear in terminal, No signal break

GENERAL TOLERANCE		UNITS	NAME:		ATOM [®] 深圳市爱特姆科技有限公司	
SELECT	✓	mm	Micro sd push conn.		SHENZHEN ATOM TECHNOLOGY CO.,LTD.	
TOL	1 2 3	MAT'L	PART NO:		TITLE:	
DN.			MR01A-01224		Micro sd push conn.(外焊型)	
X.XXX	± 0.10 ± 0.05 ± 0.15	FINISH	APPD: Peter		DWG NO. ATOM-A04350	
X.XX	± 0.15 ± 0.13 ± 0.25	Q'TY	CHKD: Jason		SCALE SHEET REV	
X.X	± 0.20 ± 0.25 ± 0.5		DR: Abel		1:1 2/2 AO	
X.	± 0.30 ± 0.38 ± 1.00					
ANGLE	$\pm 2^{\circ}$					