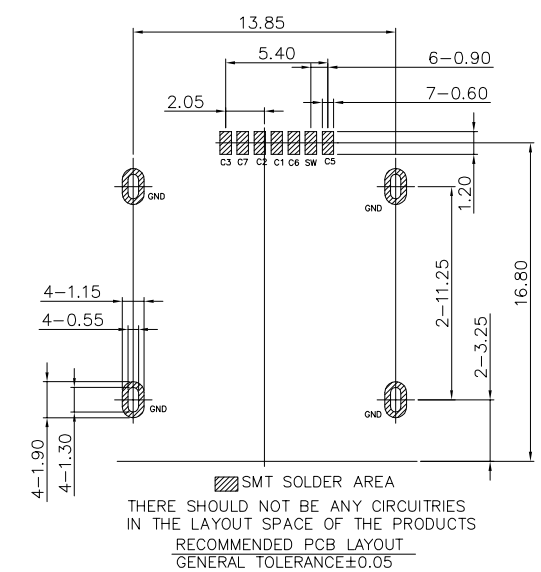
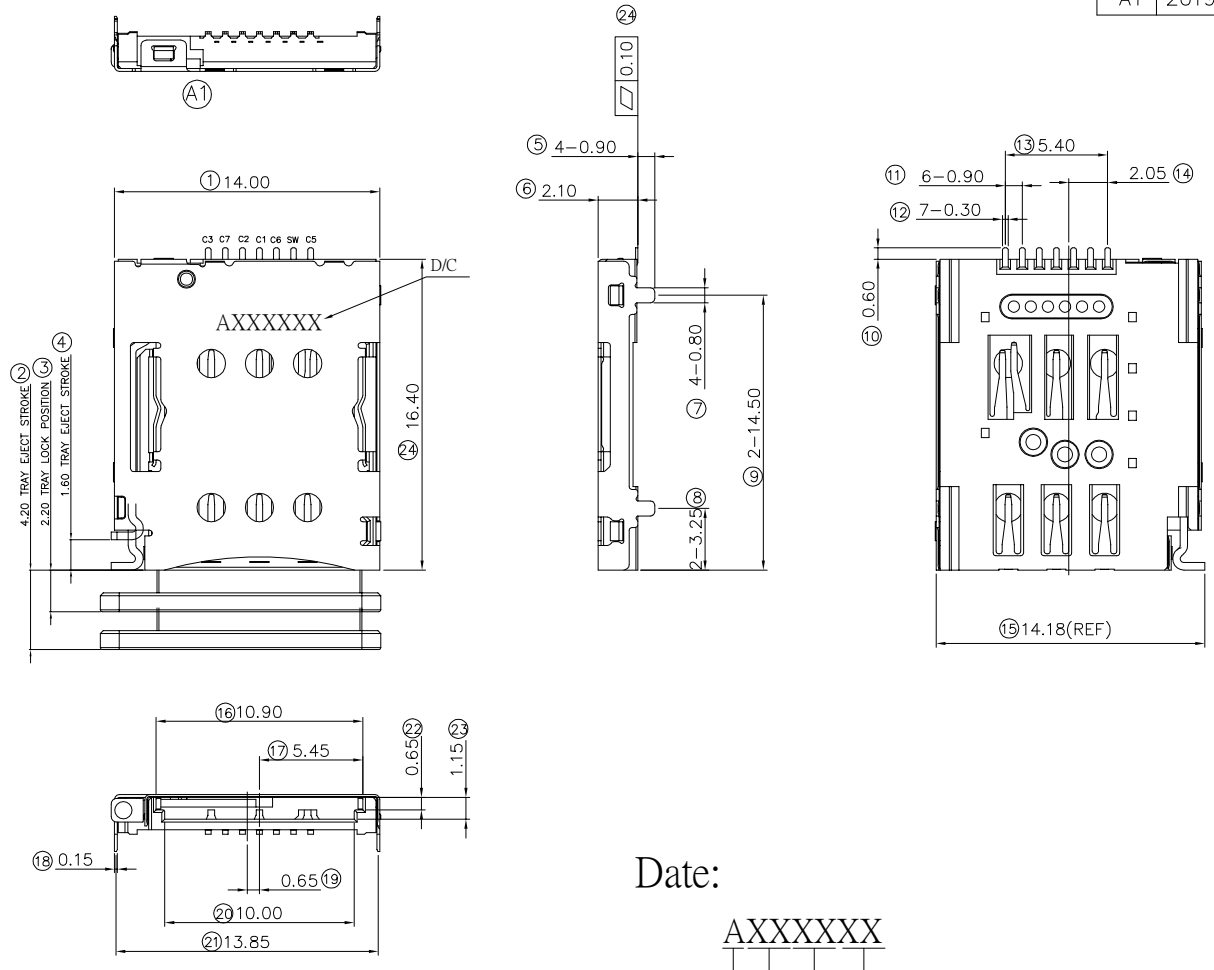


REV	DATE	ECN NO.	MODIFICATION	APPROVER
A0	2019/07/22		NEW	Jason_Lee
A1	20191107	RD00319111501	修改壳子前面扣位缺口加大,便于确认旋杆位置。	Jason_Lee

- NOTES :
- MATERIAL :
    - HOUSING:High Temperature thermoplastic,UL94V-0
    - SHELL:Stainless
    - CONTACT:Copper Alloy
  - FINISH :
    - CONTACT: GOLD PLATING ON CONTACT AREA, MATTE TIN ON SOLDERTAIL AREA,NICKEL PLATING OVERALL.
    - SHELL: SOLDERABLE NICKEL PLATED OVER ALL.
  - ELECTRICAL CHARACTERISTICS:
    - OPERATING VOLTAGE : 50V AC(rms)/DC.
    - CURRENT RATING : 0.5 A.
    - OPERATING TEMPERATURE: -25°C~+85°C.
    - CONTACT RESISTANCE: 100 m OHMS MAX.
    - INSULATION RESISTANCE: 1000M OHMS MIN. AT 250VDC.
    - DIELECTRIC WITHSTANDING VOLTAGE:500 VAC/1MINUTE.
  - PRODUCT COMPLIANT TO ROHS AND HALOGEN FREE.



Date: AXXXXXX  
 固定码 \_\_\_\_\_ 日期 \_\_\_\_\_  
 年份 \_\_\_\_\_ 月份 \_\_\_\_\_

NANO SIM CARD		COMPOSITION OF DETECTION CARD DETECT(SW) C5  SW CARD DETECTION/SWITCH CARD INSTALLATION:ON NON CARD:OFF
C1	Vcc	
C2	RST	
C3	CLK	
C5	GND	
SW	CD/SW	
C6	Vpp	
C7	DATA	

GENERAL TOLERANCE	UNITS mm	NAME: NANO SIM CARD CONNECTOR	ATOM® 深圳市爱特姆科技有限公司 SHENZHEN ATOM TECHNOLOGY CO.,LTD.
SELECT	MAT'L	PART NO: SI83C-08200	TITLE: CUSTOMER DRAWING FOR NANO SIM CARD CONNECTOR
ON.	FINISH	APPD:	DWG NO. ATOM-A04598
X.XXX	Q'TY	CHKD:	SCALE SHEET REV 1:1 1/1 A1
X.XX		DR: Abel	
X.X			
X.			
ANGLE ±2'			