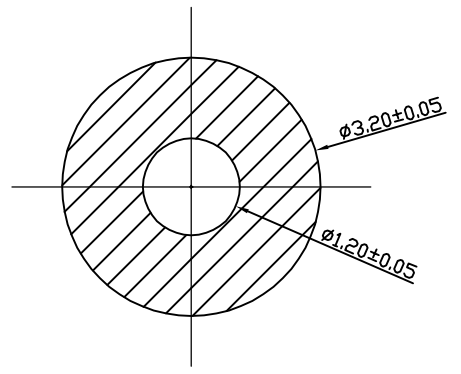
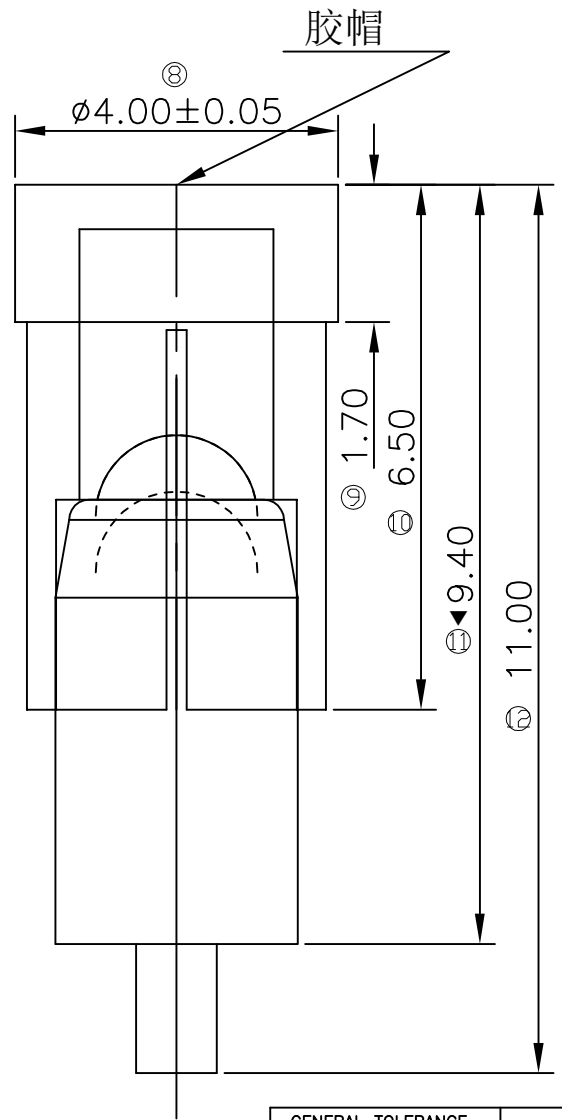
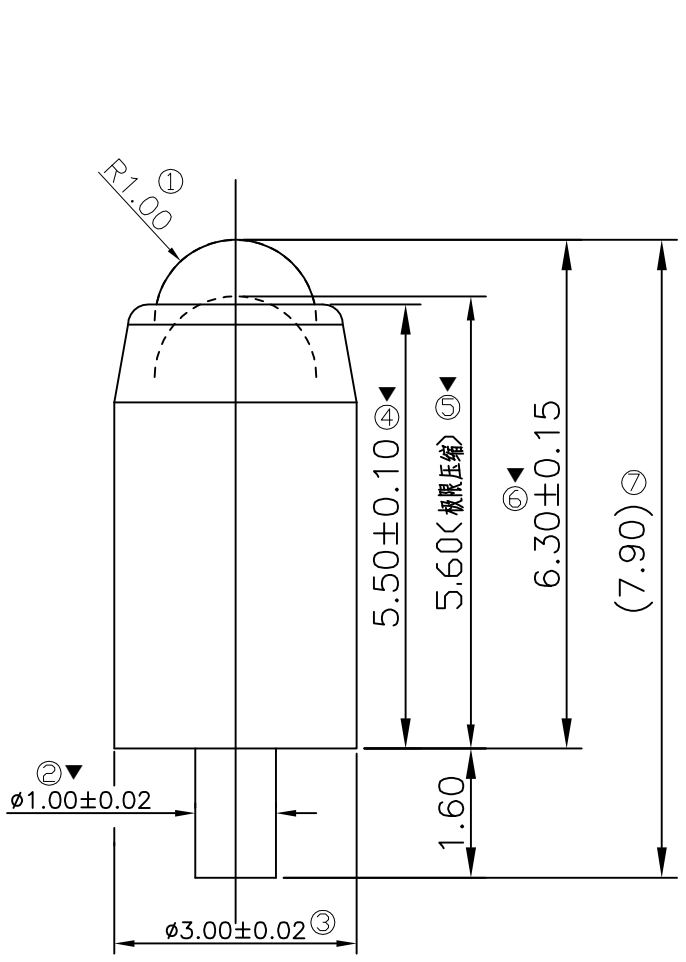


REV.	DATE	ECN NO.	MODIFICATION	APPROVER
AO	2026.05.20	/	NEW	Abel



RECOMMENDED PCB LAYOUT
TOLERANCE: ±0.05
THICKNESS: 0.8mm~1.6mm
Thickness of steel mesh 0.1mm Min

NOTE(技术规范);
1. Material(材料):
1.1 Plunger(针轴): SUS304,
1.2 Barrel(内管): C6801
Gold 1u"min plate over Nickel 50-120u"
1.3 Spring(弹簧): SUS304
2. Electrical(电气特性)
2.1 Current Rating: 1.0A Max
2.2 Voltage Rating: 12V DC
2.3 Contact Resistance: 2000mΩ Max
2.4 Insulation Resistance: 100MΩ Min
2.5 Dielectric Withstanding: AC 500V AC/DC
3. Mechanical(机械特性)
3.1 Durability: 10,000 cycles Min
4. Environments(环境特性)
4.1 Operating Environment Temperature: -40℃~+85℃
Major Dimension: ▼
Products meet RoHS environmental requirements

PG00001-D790200
产品代码: POGO PIN
产品间距
产品PIN位
预留码
1: 管装 2: 卷装 3: 盘装 4: 袋装
产品高度: H=7.90
产品类型: 180°

GENERAL TOLERANCE			UNITS mm	NAME(INTENDED USE) POGO PIN
SELECT	TOL.	ON.		
X.XXX	±0.10	±0.15 ±0.20	MAT'L	PART NO.(INTENDED USE) PG00001-D790200
X.XX	±0.15	±0.20 ±0.25	FINISH	APPD: Abel
X.X	±0.20	±0.25 ±0.30		CHKD: Vicky
X.	±0.25	±0.30 ±0.50	Q'TY	DR: LU
ANGLE	±2'			

TITLE: Customer Drawing For POGO PIN 1P 0984 L=7.90mm 带夹持盖 滚珠			DWG NO.: ATOM-A12705		
SCALE	SHEET	REV.			
1:1	1/1	AO			

