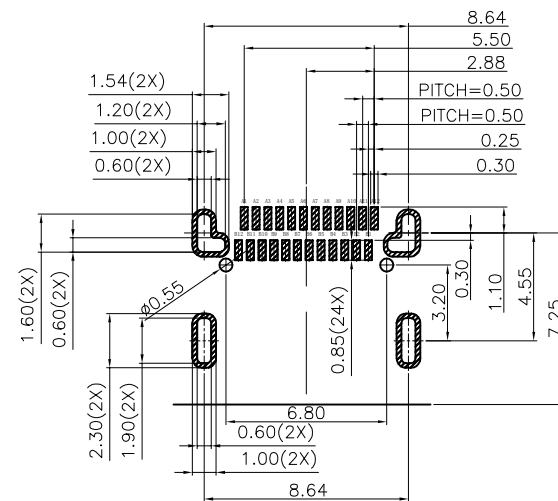
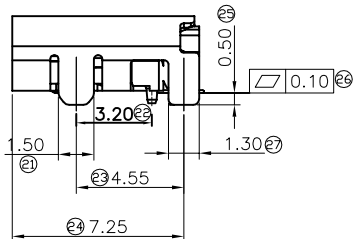
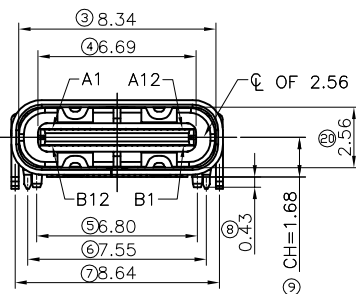
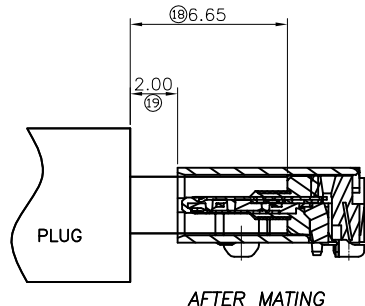
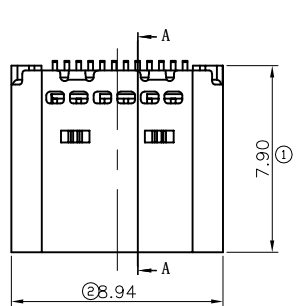


REV.	DATE	ECN.NO	MODIFY.CONTENT	APPROVER
A	2019.04.12		初版发行	Jason



RECOMMENDED PCB LAYOUT(TOP VIEW)
THICKNESS 0.60MM;DEFAULT TOLERANCE:±0.05

Notes:

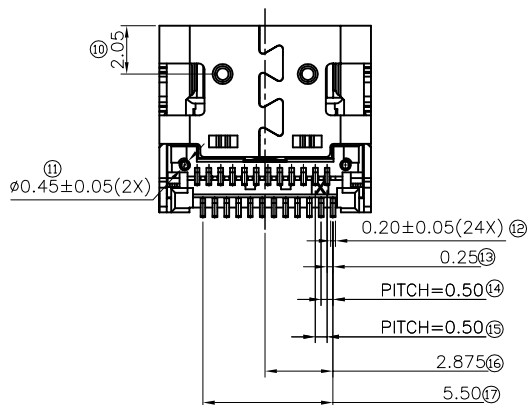
- 1.Operation voltage: 5V AC max.
- 2.Current rating 5.0Amps max.
- 3.Contact resistance:VBUS&GND PINS 40mΩ max.other pins 50mΩ max.LLCR max.Change of all pins 10mΩ
- 4.Insulation resistance: 100MΩ min.
- 5.Dielectric withstanding voltage: 100 VAC / 1minute
- 6.Operating Temperature: -25°C to +85°C
- 7.Insertion force:5~20N
- 8.Removal force:8~20N
- 9.Durability 10000 cycles.

MATERIAL

- 1.Housing:Thermoplastic(UL 94V-0)
 - 2.Contacts:Copper alloy
 - 3.Shell:Stainless steel
- Plating:
- 1.Contacts:Gold plated over Ni under plated
 - 2.Shell:Nickel plated.
- Lead free and ROHS compliant product.

USB TYPE-C PIN ASSIGNMENTS

PIN NUMBER	SIGNAL NAME	PIN NUMBER	SIGNAL NAME
A1	GND	B12	GND
A2	SSTXp1	B11	SSRXp1
A3	SSTXn1	B10	SSRXn1
A4	Vbus	B9	Vbus
A5	CC1	B8	SBU2
A6	Dp1	B7	Dn2
A7	Dn1	B6	Dp2
A8	SBU1	B5	CC2
A9	Vbus	B4	Vbus
A10	SSRXn2	B3	SSTXn2
A11	SSRXp2	B2	SSTXp2
A12	GND	B1	GND



GENERAL TOLERANCE			UNITS	mm	NAME(INTENDED USE)	深圳市爱特姆科技有限公司 SHENZHEN ATOM TECHNOLOGY CO., LTD.
SELECT	✓		MAT'L			
TOL.	1	2	3	FINISH	PART NO.(INTENDED USE)	TITLE: CUSTOMER DRAWING FOR
X.XXX	±0.10	±0.05	±0.15		USB624FC-C2014215	USB 3.1 24P FEMALE SMT C TYPE 外壳四脚插板 带定位柱
X.XX	±0.20	±0.13	±0.25	Q'TY	APPD: Jason	DWG NO.:
X.X	±0.25	±0.25	±0.50		CHKD: Abel	ATOM-A05256
X.	±0.30	±0.38	±1.00	DR: Jessica	SCALE	SHEET
ANGLE	±2'				1:1	1/1
						REV.
						A