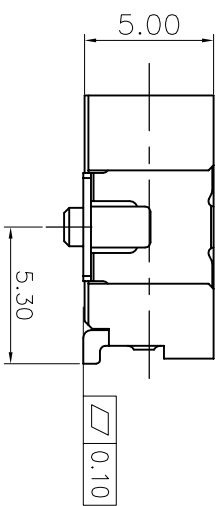
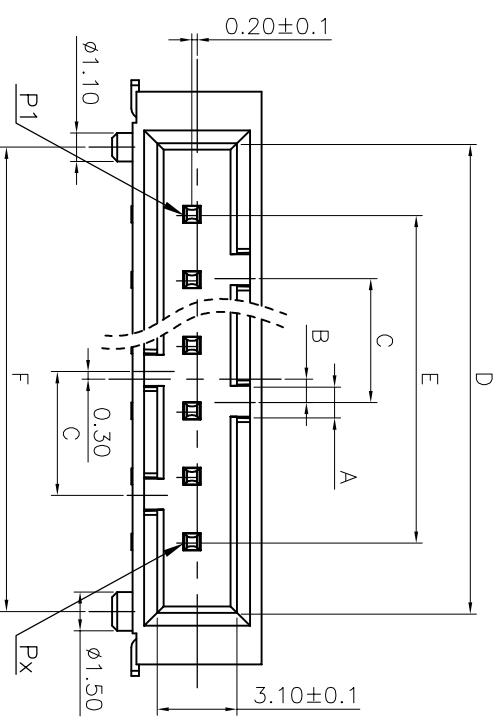
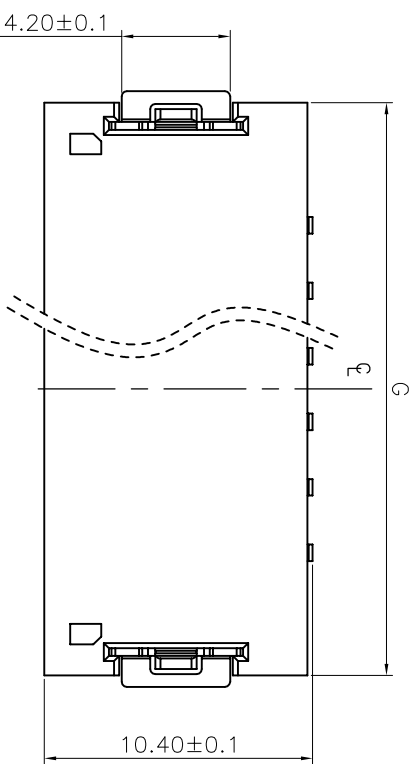
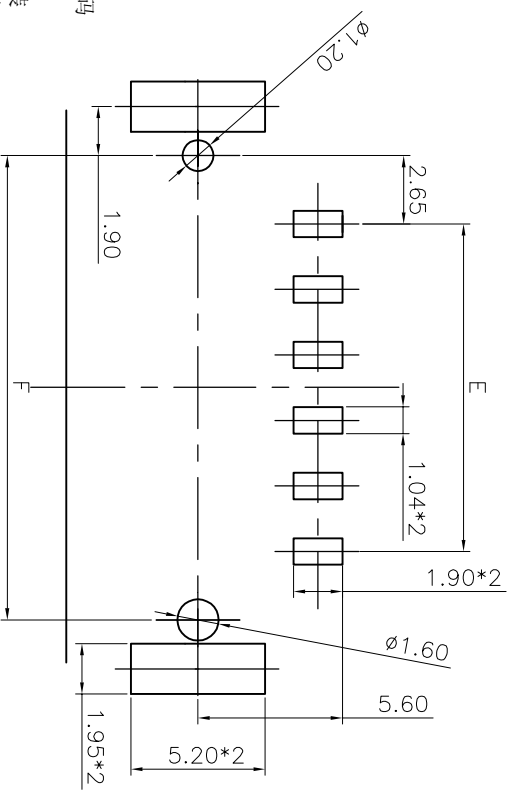


|         |                 |           |                  |              |
|---------|-----------------|-----------|------------------|--------------|
| REV. A0 | DATE 2023.08.22 | ECN NO. / | MODIFICATION NEW | APPROVER Zfg |
|---------|-----------------|-----------|------------------|--------------|



产品代码WF: Wafer筒写  
 产品间距: 2.54mm  
 产品Pin位: 02-06  
 00: 流水码  
 1表示管装  
 2表示卷装  
 68: 卧式带内扣



RECOMMEND P.C.B LAYOUT(TOP VIEW)  
 DEFAULT TOLERANCES: ±0.05; PCB THICKNESS: 1.6mm

- NOTES:
- 1.MATERIAL:  
Housing: High Temperature Materials  
Natural UL94V-0  
Terminal: Copper Alloy  
H.D: Metal
  - 2.Plating:  
Terminal: Tin Plating With Nickel Under Plating Overall  
H.D: Tin Plating With Nickel Under Plating Overall
  - 3.Dielectric Withstanding Voltage: 1000V AC
  - 4.Insulator Resistance: 500MΩ

尺寸

| 极数 | A    | B    | C    | D     | E     | F     | G     |
|----|------|------|------|-------|-------|-------|-------|
| 2  | 0.6  | 0.60 | 2.40 | 8.04  | 2.54  | 7.84  | 12.04 |
| 3  | 0.6  | 0.60 | 2.40 | 10.58 | 5.08  | 10.38 | 14.58 |
| 4  | 1.20 | 0.90 | 4.80 | 13.12 | 7.62  | 12.92 | 17.12 |
| 5  | 1.20 | 0.90 | 4.80 | 15.66 | 10.16 | 15.46 | 19.66 |
| 6  | 1.20 | 0.90 | 4.80 | 18.20 | 12.70 | 18.00 | 22.20 |

| GENERAL TOLERANCE |       |       | UNITS |                |                       | NAME(INTENDED USE)                                     |           | TITLE:               |  |
|-------------------|-------|-------|-------|----------------|-----------------------|--|-----------|----------------------|--|
| SELECT            | TOL   |       | mm    | PIN SOCKET     | PH 2.54mm *PIN SMT 卧式 | ATOM 深圳市爱特姆科技有限公司<br>SHENZHEN ATOM TECHNOLOGY CO.,LTD. |           | DWG NO.: ATOM-A10978 |  |
| 1                 | 1     | 2     | 3     | WF254**--68200 |                       |  | SCALE 1:1 |                      |  |
| X.XXX             | ±0.10 | ±0.15 | ±0.20 | FINISH         | Q'TY                  |  | SHEET 1/1 |                      |  |
| X.XX              | ±0.15 | ±0.20 | ±0.25 | DR: Zfg        |                       |  | REV. A0   |                      |  |
| X                 | ±0.20 | ±0.25 | ±0.30 |                |                       |  |           |                      |  |
| ANGLE             | ±°    | ±°    | ±0.50 |                |                       |  |           |                      |  |

1 2 3 4 5 6 7 8